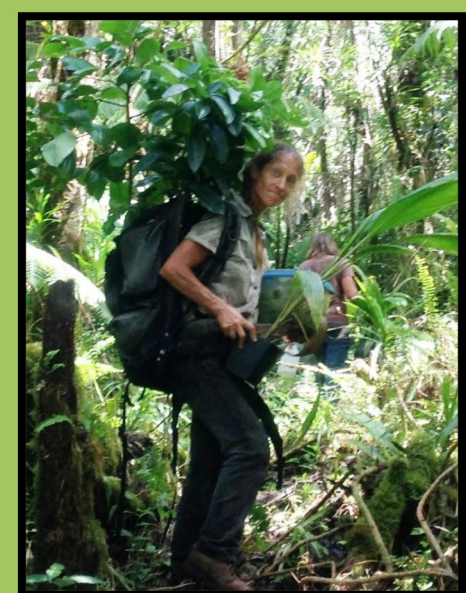


Restoration Efforts Include

- Controlling invasive species
- Growing native seedlings in nursery
- Outplanting and tending native species
- Maintaining trails / managing deadwood



Tree Planting



Weed Pulling / Composting



Waiawi Wood Pile

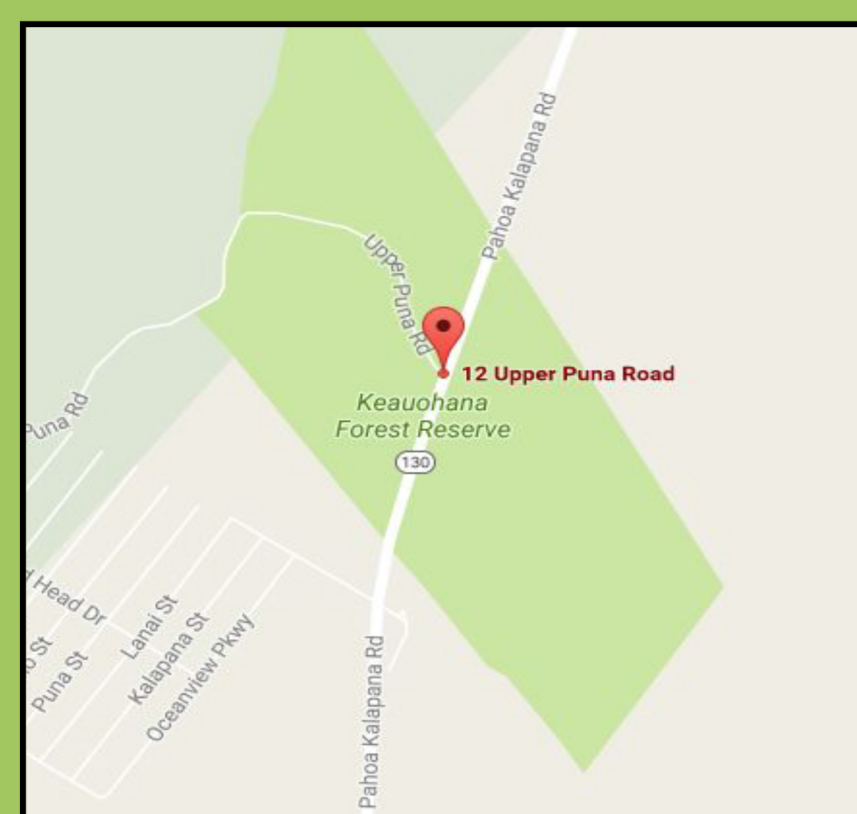
Before

After

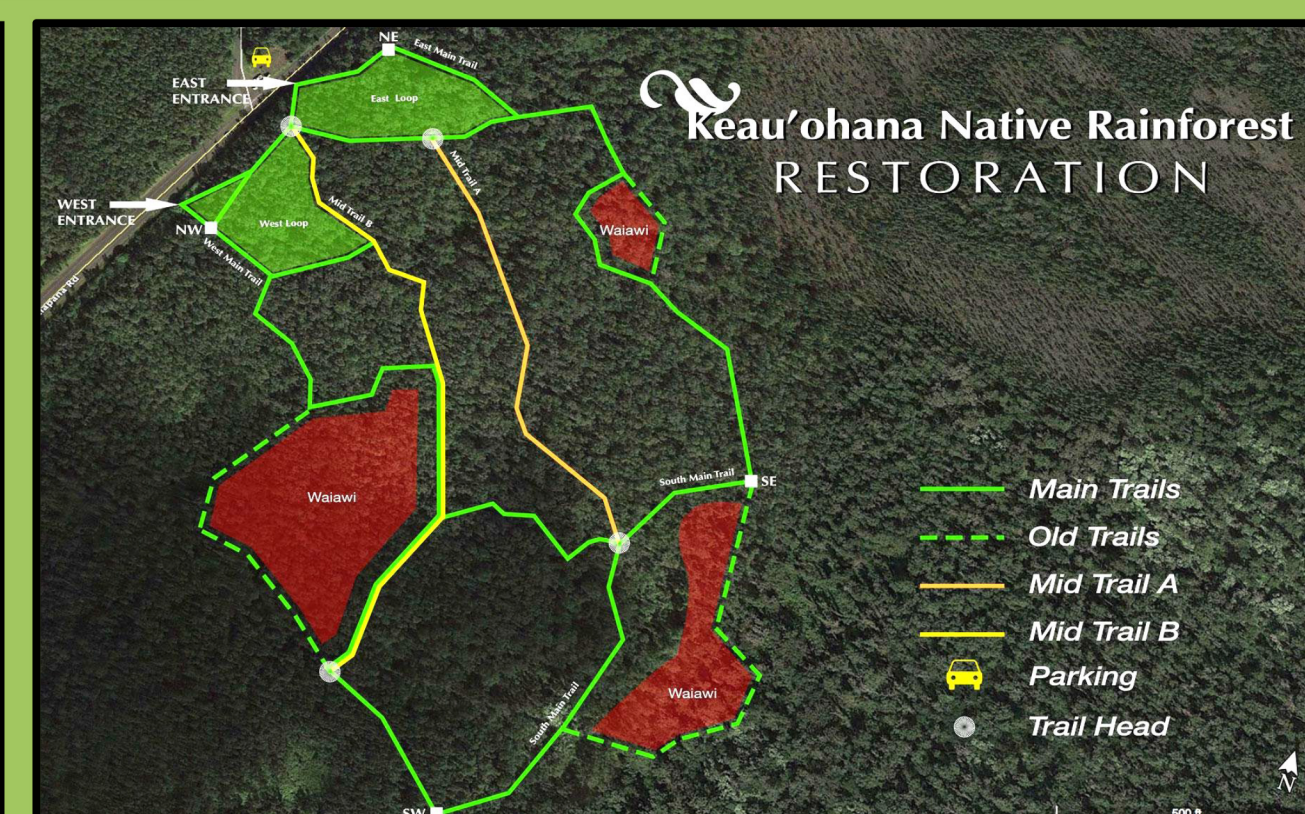


Top: Clidemia, Middle: Waiawi (strawberry guava) Bottom: Endangered ha'iwale

Keau'ohana Forest Reserve



Located between Pahoa and Kalapana on HWY 130 near Black Sands at the intersection of Upper Puna Rd. (between mile marker 16 and 17)



Keau'ohana Native Rainforest Restoration

Hawai'i Environmental Restoration



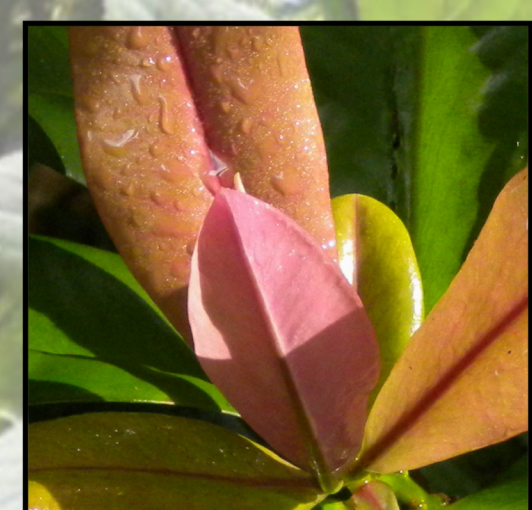
Keau'ohana State Forest Reserve, in the Puna District of Hawai'i, is Hawai'i's last remaining native lowland rainforest <1,000 ft. It provides the last remaining critical habitat for many rare and endangered native species and is a reservoir of unique plant biodiversity found nowhere else in the world.

Since 2014, Keau'ohana has undergone intensive restoration to control invasive species and to plant native species on 30 acres in the most biodiverse portion of the reserve. Keau'ohana is serving as a living classroom for student and community groups to learn about native species, native forest restoration and lowland issues of invasion.

Native Species:



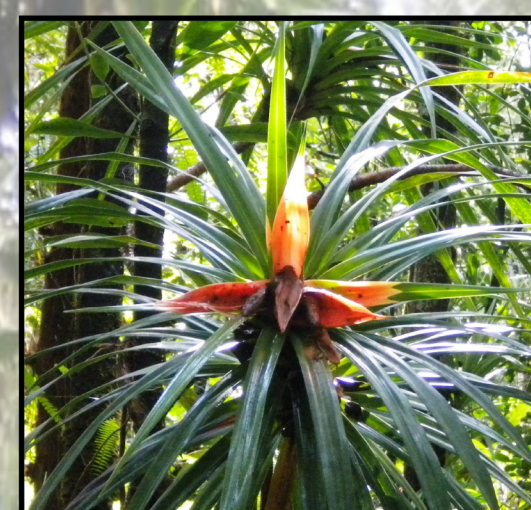
Ekaha



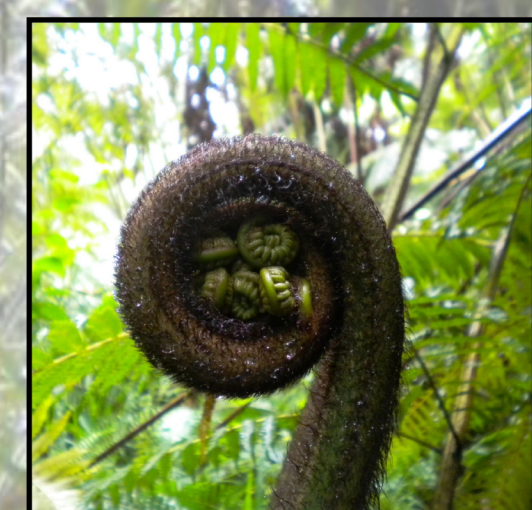
Kolea



Kopiko



'le 'ie



Hapu'u



Ha'iwale

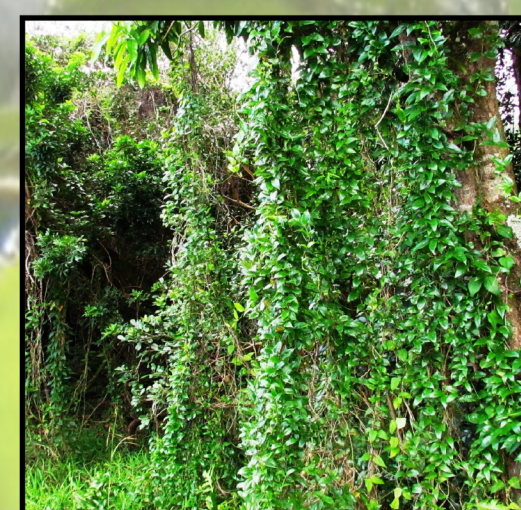
Invasive Species:



Waiawi



Clidemia



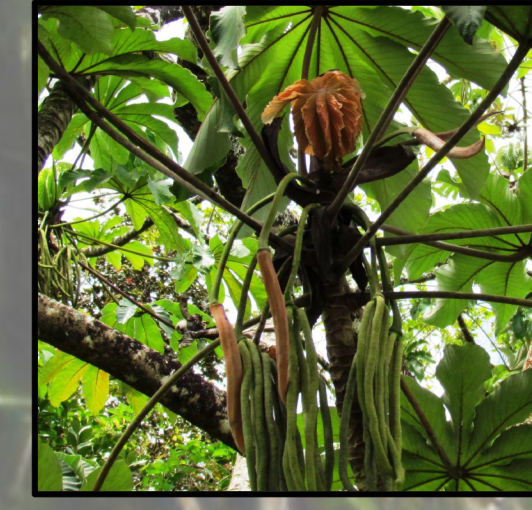
Kukae Maile



Melastoma



Thimble Berry



Cecropia

Funding Sources for this project include: State of Hawai'i Grant-In-Aid, County Council Contingency Funds, Fruit Tree Planting Foundation, Island Naturals, Big Island Invasive Species Committee, private donations.

Ways You Can Help

1. Volunteer opportunities

- Join our quarterly work parties
- Volunteer on regular crew days
- Schedule a separate group event
- Offer special outreach skills



2. Make a tax-deductible donation

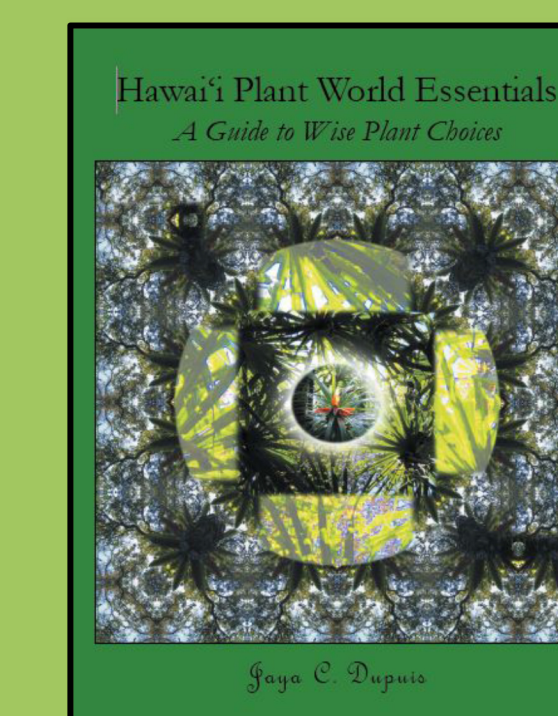
Visit www.hawaiienvironmentalrestoration.org

3. Help in your own yard

Order "*Hawai'i Plant World Essentials*"

A guide to making wise plant choices

www.hawaiienvironmentalrestoration.org/plant-book



4. Buy Jaya's art online

www.fineartamerica.com/profiles/cindy-dupuis



For more information and to sign up on our email list visit:

www.hawaiienvironmentalrestoration.org

Facebook.com/PunaRainforest

Or contact Project Coordinator

Jaya C. Dupuis

dupuis@hawaii.edu

Mahalo Nui Loa!